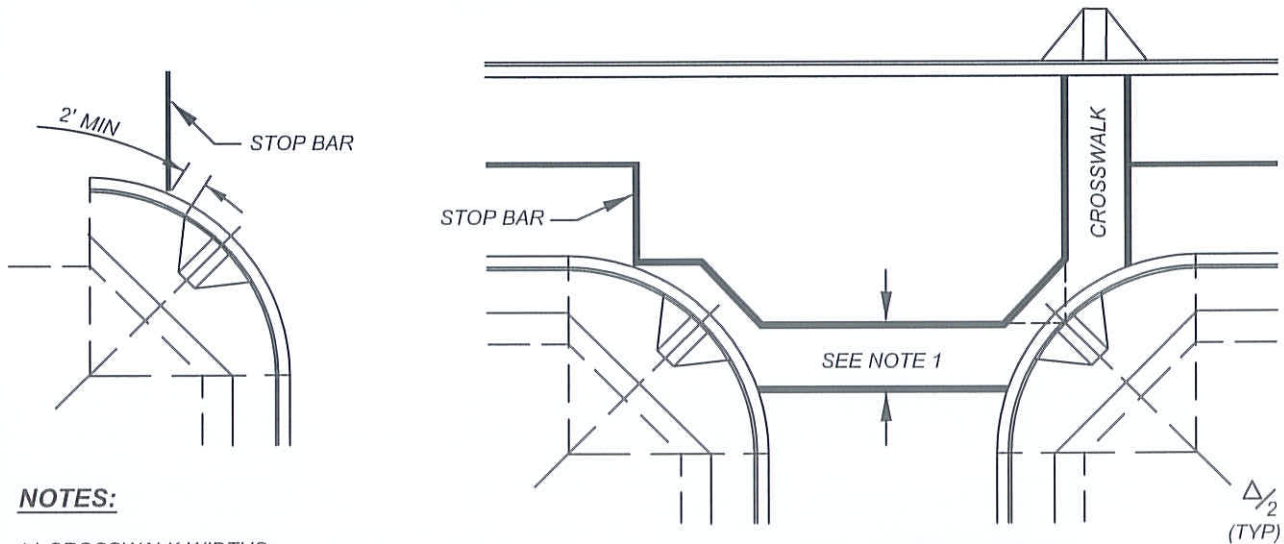


**FOUR LEG INTERSECTION**

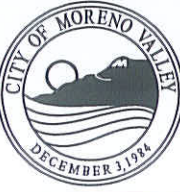


**"T" INTERSECTION**

**NOTES:**

- 1.) CROSSWALK WIDTHS:  
 10' (INSIDE TO INSIDE) CROSSWALK FOR ROAD WIDTH 44' OR LESS  
 12' (INSIDE TO INSIDE) CROSSWALK FOR ROAD WIDTH MORE THAN 44'.
- 2.) PEDESTRIAN PUSH BUTTON SHOULD BE LOCATED NOT MORE THAN 5' FROM CROSSWALK. SEPARATE PUSH BUTTON POSTS SHOULD BE USED WHEN THE SIGNAL POLES ARE MORE THAN 5' FROM CROSSWALK.
- 3.) STOP BAR AND CROSSWALK SHALL BE THERMOPLASTIC, LOCATION TO BE DETERMINED IN FIELD.
- 4.) THE ENGINEER WILL DETERMINE CROSSWALK LOCATIONS THAT VARY FROM THIS STANDARD.

NOT TO SCALE

|   |  |   |  |
|---|--|---|--|
|  | RECOMMENDED:<br><div style="display: flex; justify-content: space-between;"> <span><i>EL</i></span> <span><i>1/21/14</i></span> </div> DIVISION MANAGER      DATE                          | <h2 style="margin: 0;">CITY OF MORENO VALLEY</h2> <p style="margin: 0;">PUBLIC WORKS DEPARTMENT - TRANSPORTATION ENGINEERING DIVISION</p> | STANDARD PLAN<br><h3 style="margin: 0;">MVL-432-0</h3> |
|   | APPROVED:<br><div style="display: flex; justify-content: space-between;"> <span><i>[Signature]</i></span> <span><i>1/29/14</i></span> </div> PUBLIC WORKS DIRECTOR / DATE<br>CITY ENGINEER | <h2 style="margin: 0;">CROSSWALK LOCATION</h2>  | SHEET 1 OF 1   |